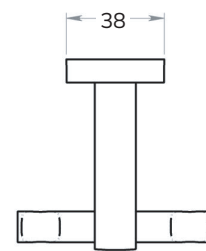
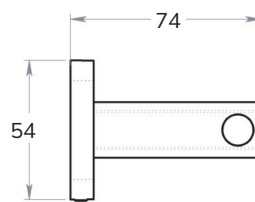
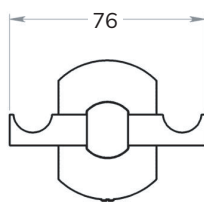
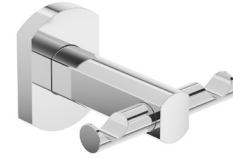


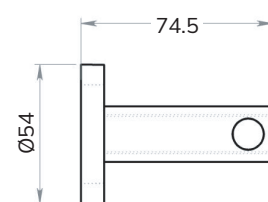
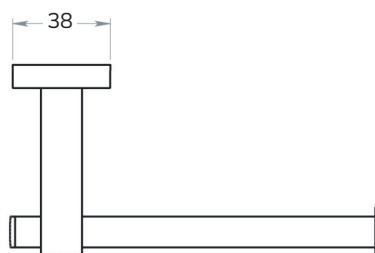
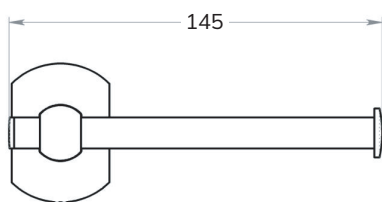
PARMA Robe Hook

CODE	UA0012
MATERIAL	Cromall®
DIMENSIONS	See technical drawing
FIXINGS	Screw to wall fixings supplied



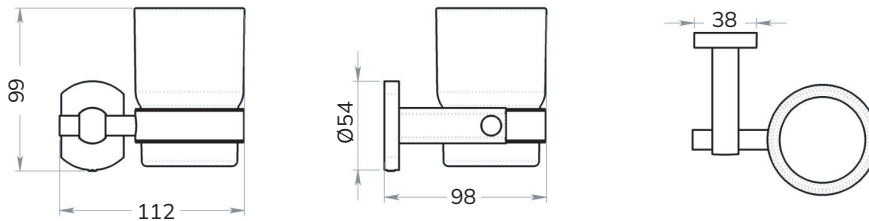
PARMA Toilet Roll Holder

CODE	UA0011
MATERIAL	Wall plate in galvanised steel. Support in Cromall® Chromed AISI 201 stainless steel tube Chromed ABS roll stopper
DIMENSIONS	See technical drawing
FIXINGS	Screw to wall fixings supplied



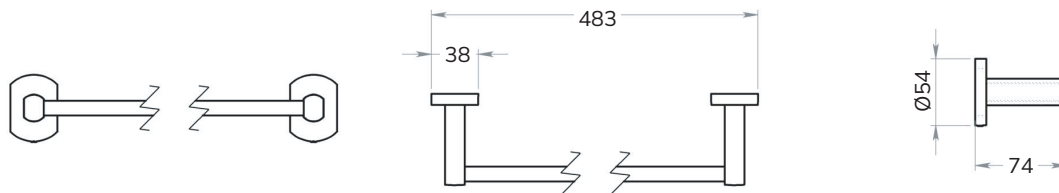
PARMA Toothbrush Holder

CODE	UA0015
MATERIAL	Wall plate, cover plate, support and ring in Cromall® Glass in frosted glass Translucent thermoplastic resins gasket
DIMENSIONS	See technical drawing
FIXINGS	Screw to wall fixings supplied



PARMA Towel Rail

CODE	UA0014
MATERIAL	Chromed AISI 201 stainless steel rod Wall plates, cover plates and supports in Cromall®
DIMENSIONS	See technical drawing
FIXINGS	Screw to wall fixings supplied



PARMA Towel Ring

CODE	UA0013
MATERIAL	Wall plate in galvanised Cromall® Cover and support in chromed Cromall® Chrome-plated AISI 201 stainless steel tube
DIMENSIONS	See technical drawing
FIXINGS	Screw to wall fixings supplied

